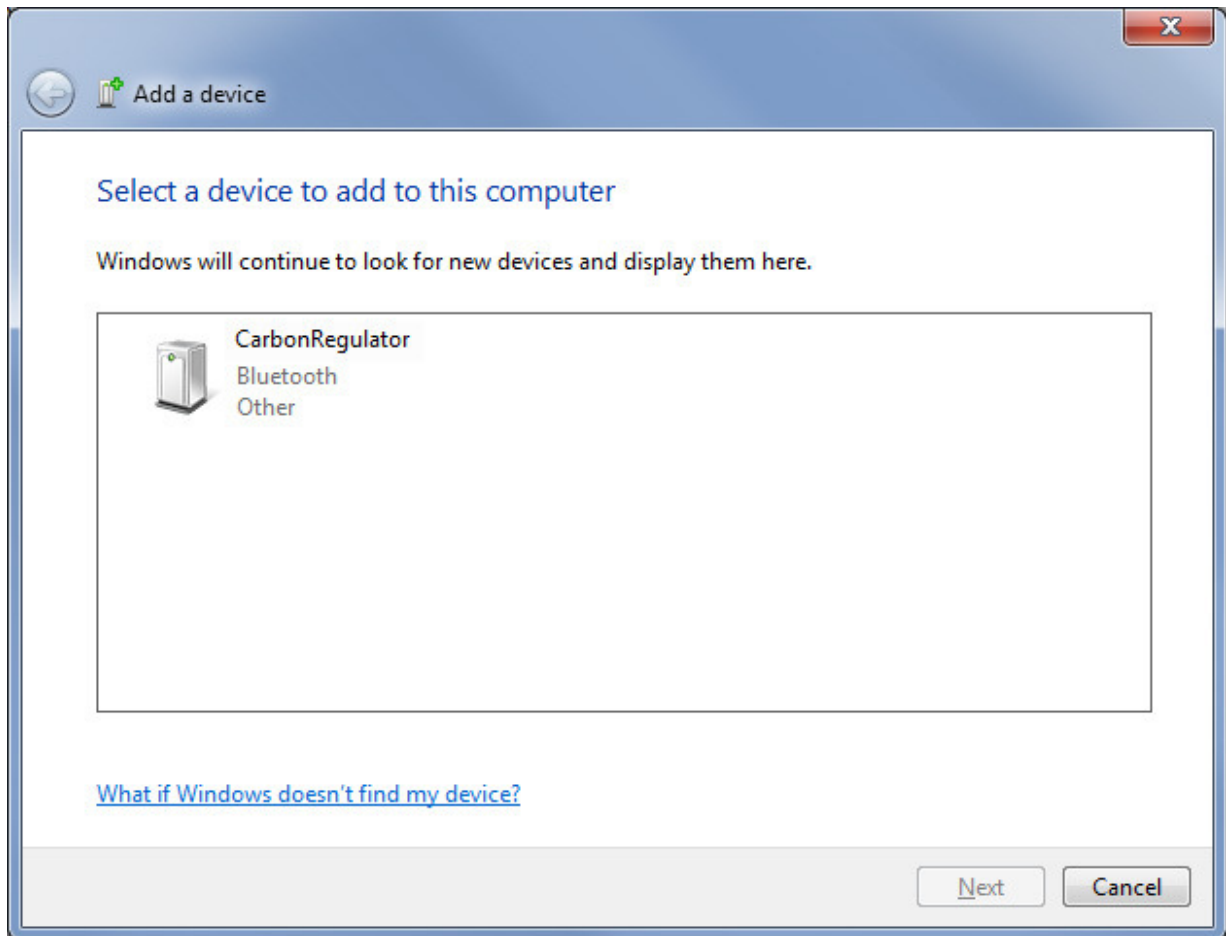

Add Bluetooth

Step 1.

If you have external USB Bluetooth unit you should plug it in a USB port and let the computer install it. When the Window system has installed the USB unit go to the taskbar and open the Bluetooth window.

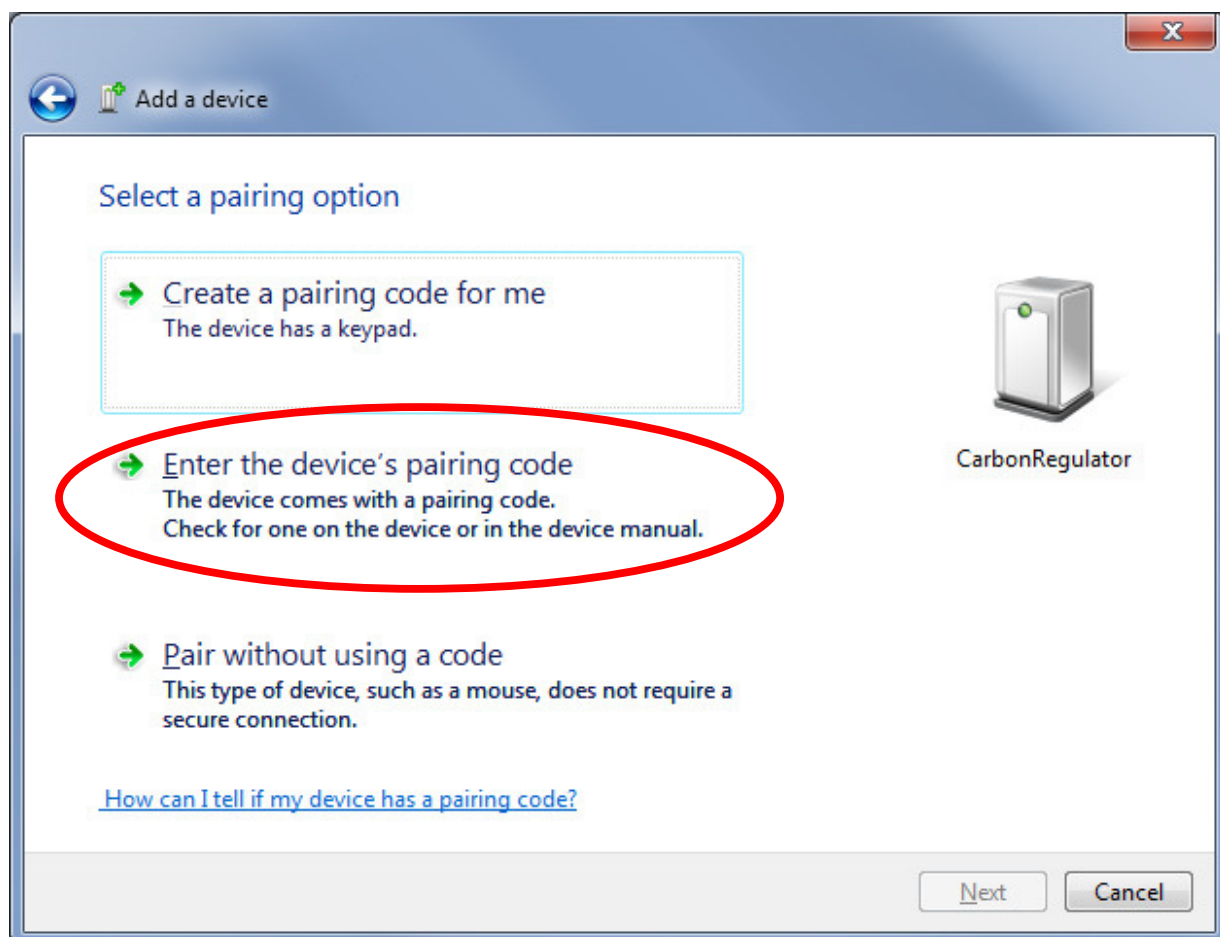
Add a device and the "CarbonRegulator" will appear.



Choose CarbonRegulator and click Next

Step 2.

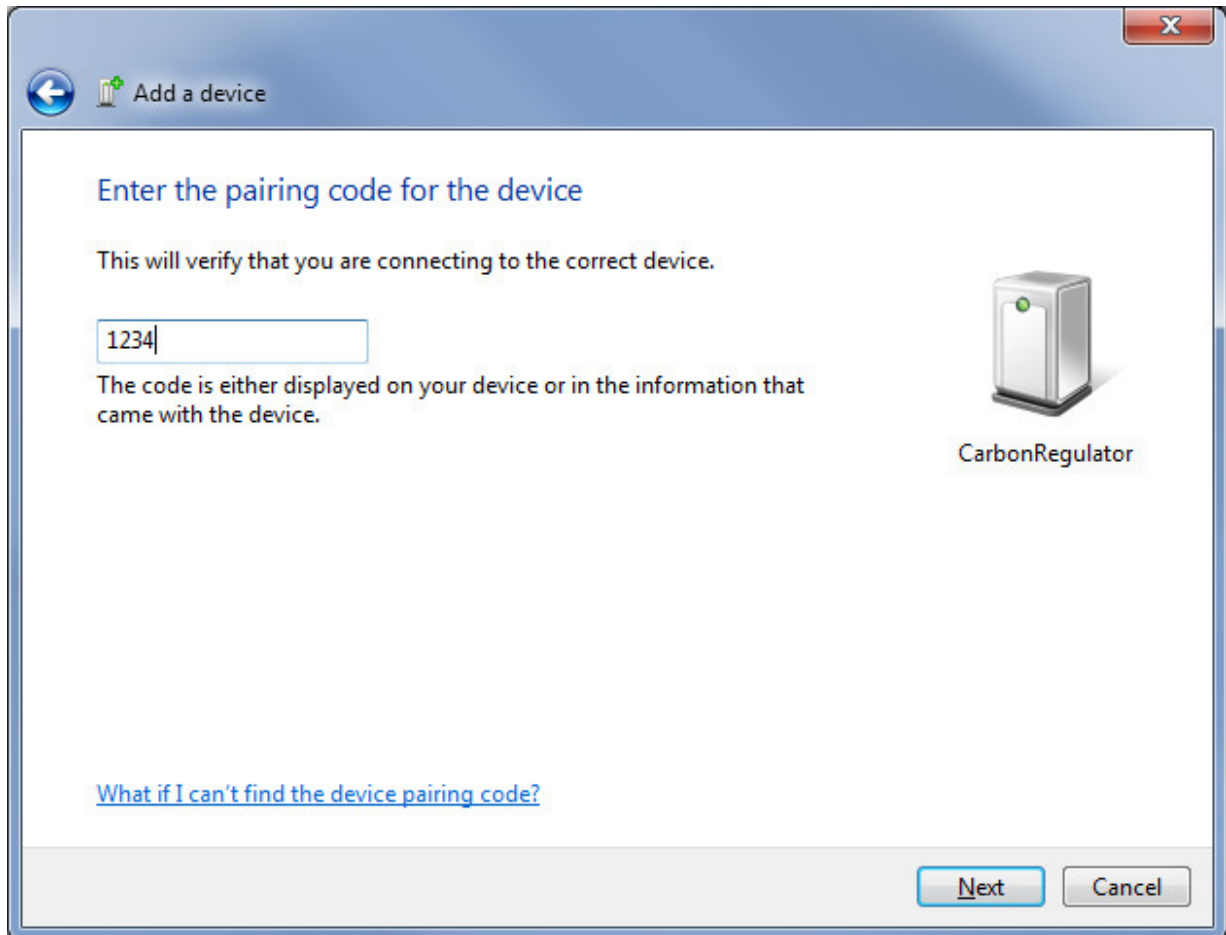
Click "Enter the device pairing code "



The pairing code is 1234

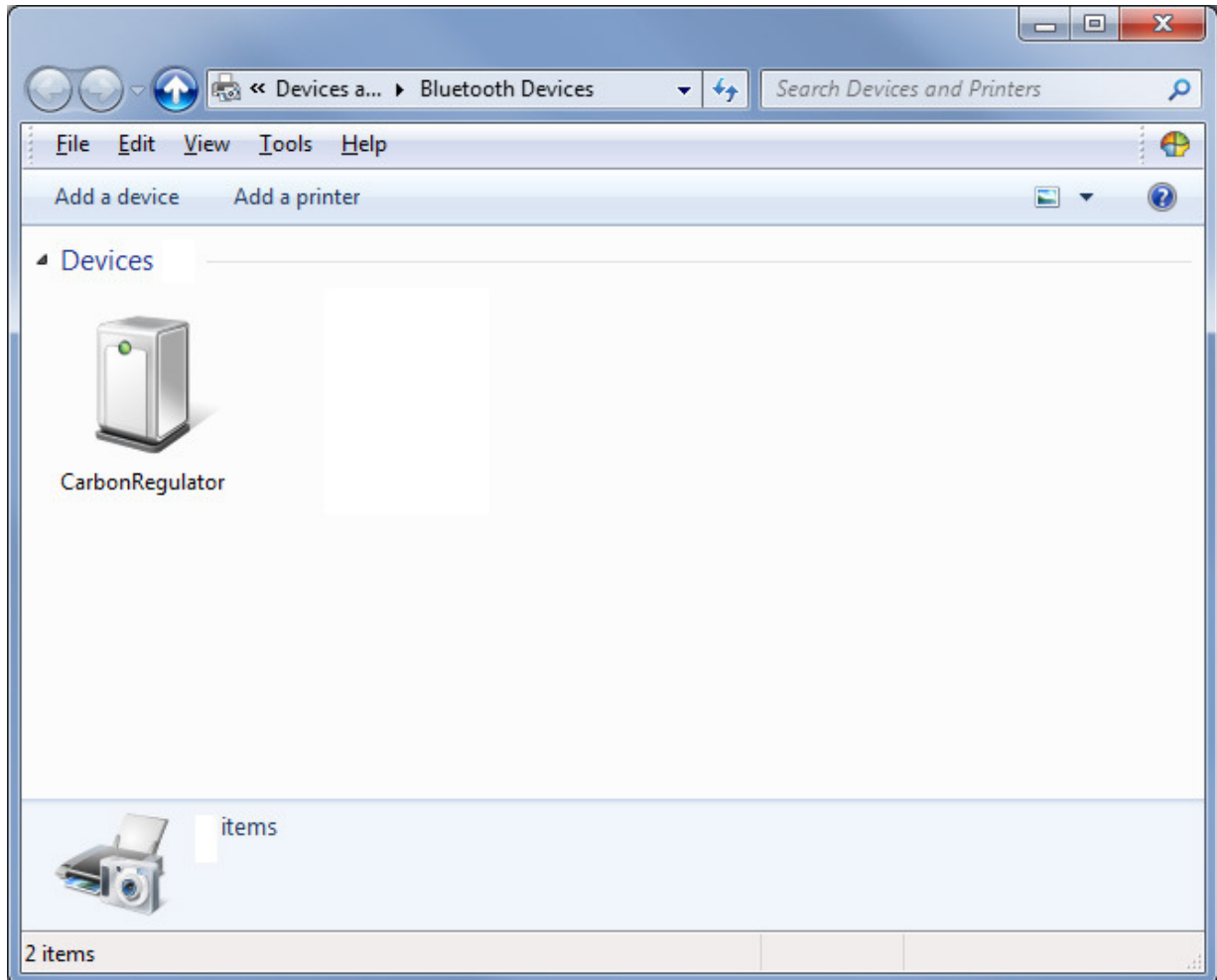
Step 3.

Click "Enter the device pairing code " 1234



Step 4.

Unit is now paired and ready to be used.



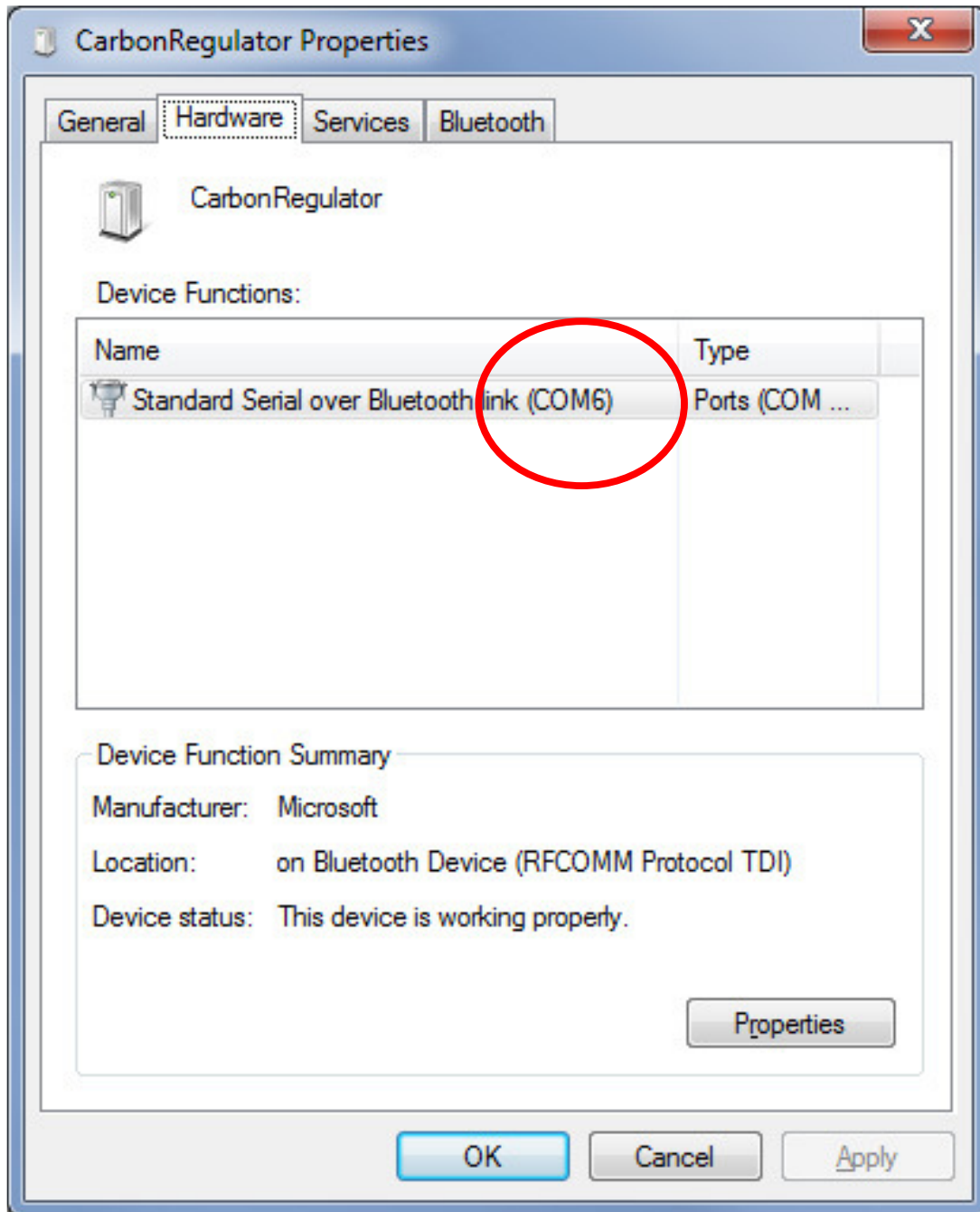
Right click on the device and choose properties

Step 5.

Choose tab "Hardware" and you will see which COM port your Bluetooth will use. This will be important later when using the Carbon logging software.

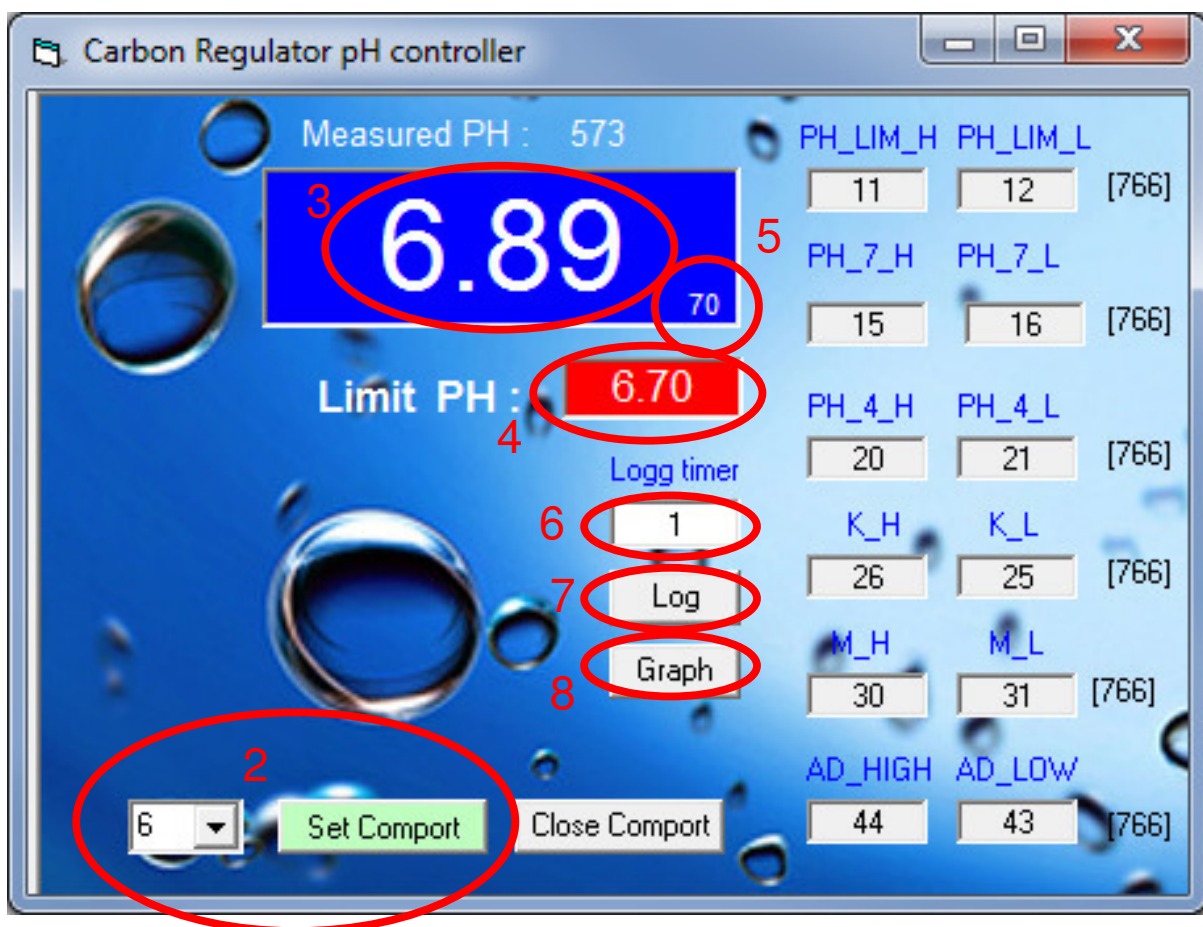
In the case below the COM6 will be used for the Bluetooth communication.

You will also be able to find this information in the "DeviceManager" under Ports.



Step 6.

- 1.) Start the Carbon Regulator pH controller software
- 2.) Select COM6 and click button "Set Comport"
- 3.) The Main window will show the pH (in this case 6.89)
- 4.) The Red window "Limit pH" will show your "wanted" pH (in this case 6.70)
- 5.) This is a time counter until next measurement
- 6.) Log time set the time frame between two logging. In this case "1" means that every data will be logged. If you write "2", every second data will be logged and so on.
- 7.) Press the button "Log" to see raw data
- 8.) Press the button "Graph" to see graphic view of the pH



Step 7.

With the graph you can change the scale, show the valve and change grid.

The "Show Valve" function will draw a vertical red line at the bottom of the graph every time the valve is activated to inject gas in the aquarium.

